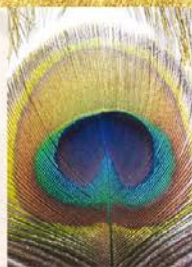


Peacock Heights

steeped in history at oundle



SOVEREIGN

HOUSES

Sovereign
Reigns

Illustration by kind permission of Gorn Wainwright.



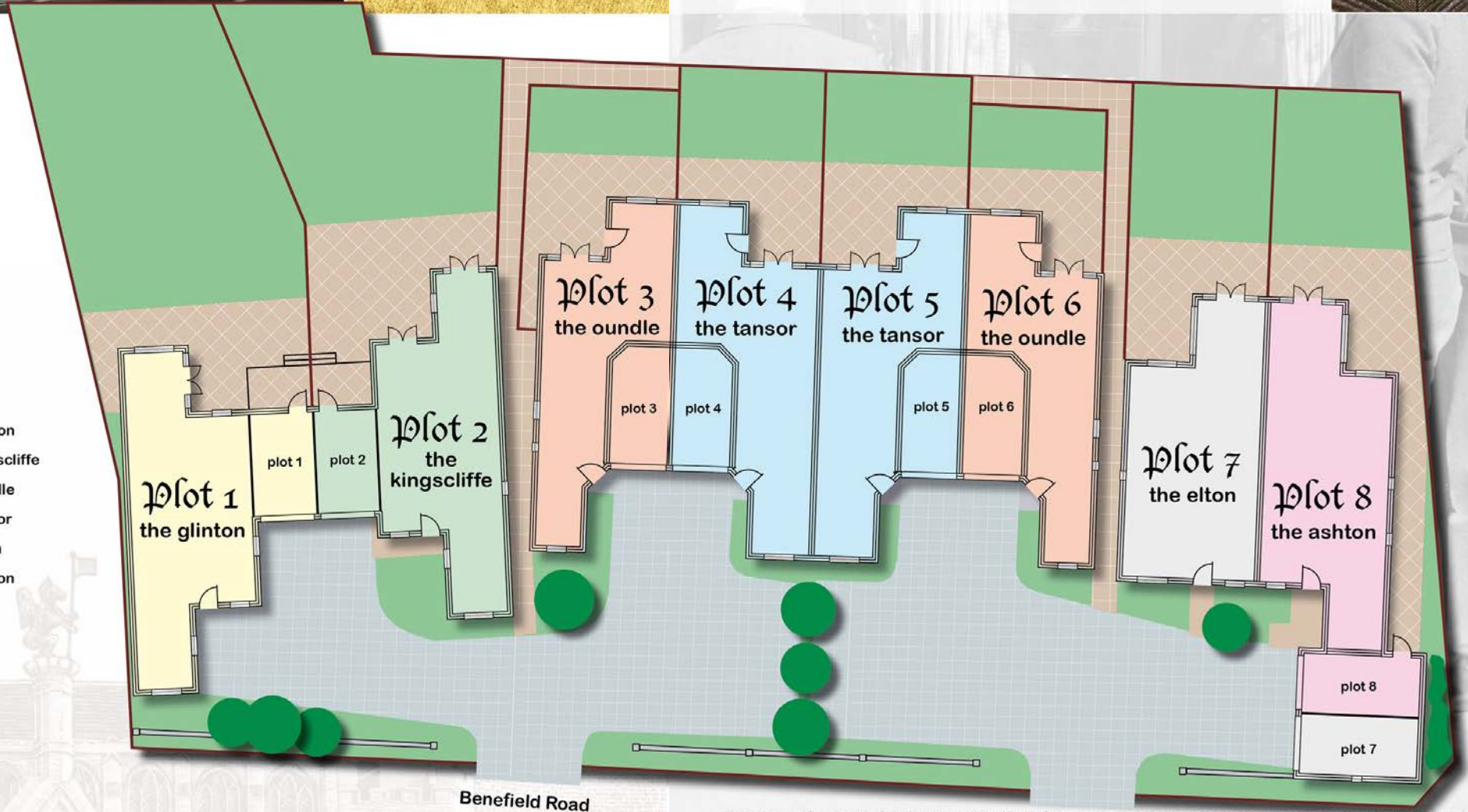
Peacock Heights

site plan



Key

- the glinton
- the kingscliffe
- the oundle
- the tansor
- the elton
- the ashton



Illustrations and floorplans are for guidance only and subject to Sovereign Homes (UK) Ltd. continuous improvement policy. Please see inside back cover.



1945

1947

1949

1950

1951



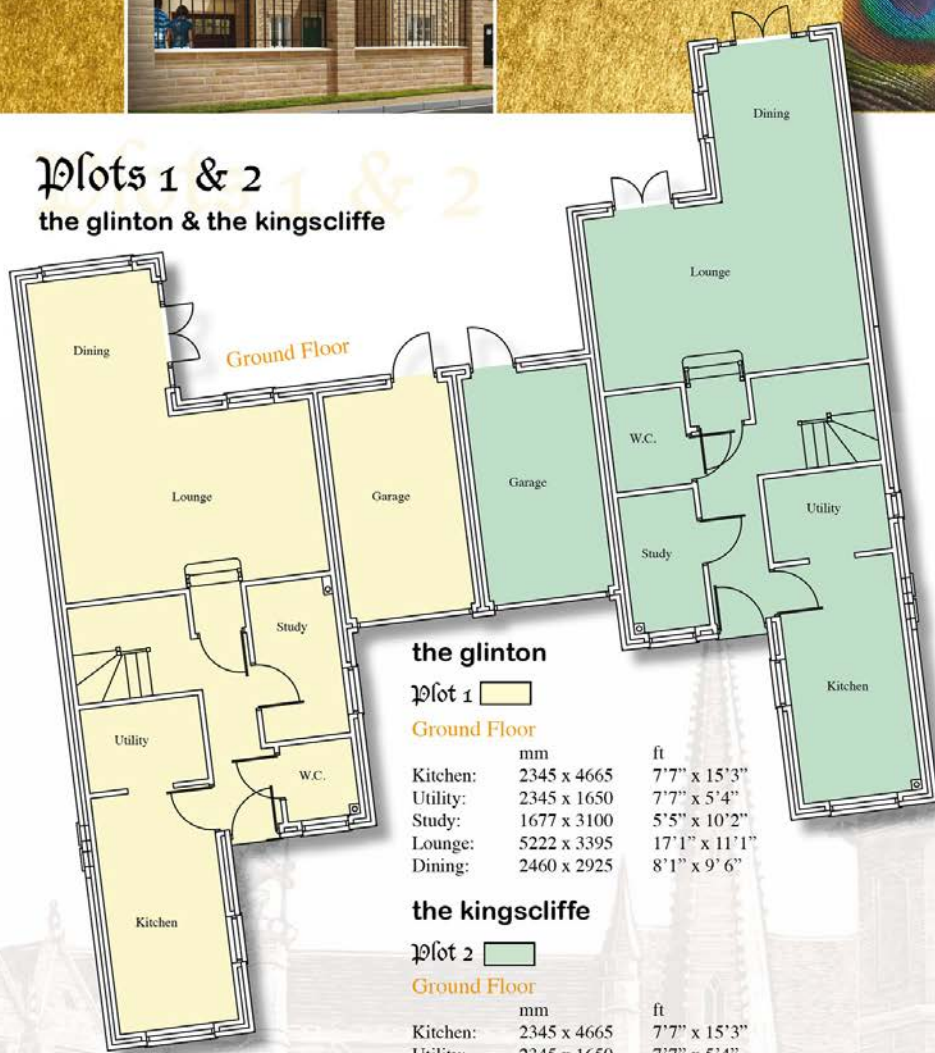
1956

1958

1960



Plots 1 & 2 the glinton & the kingscliffe

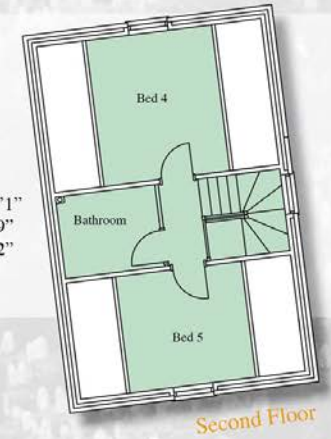


the kingscliffe

Plot 2

Second Floor

	mm	ft
Bed 4:	2926 x 3395	9'6" x 11'1"
Bed 5:	2926 x 2700	9'6" x 8'9"
Bathroom:	2312 x 1900	7'6" x 6'2"



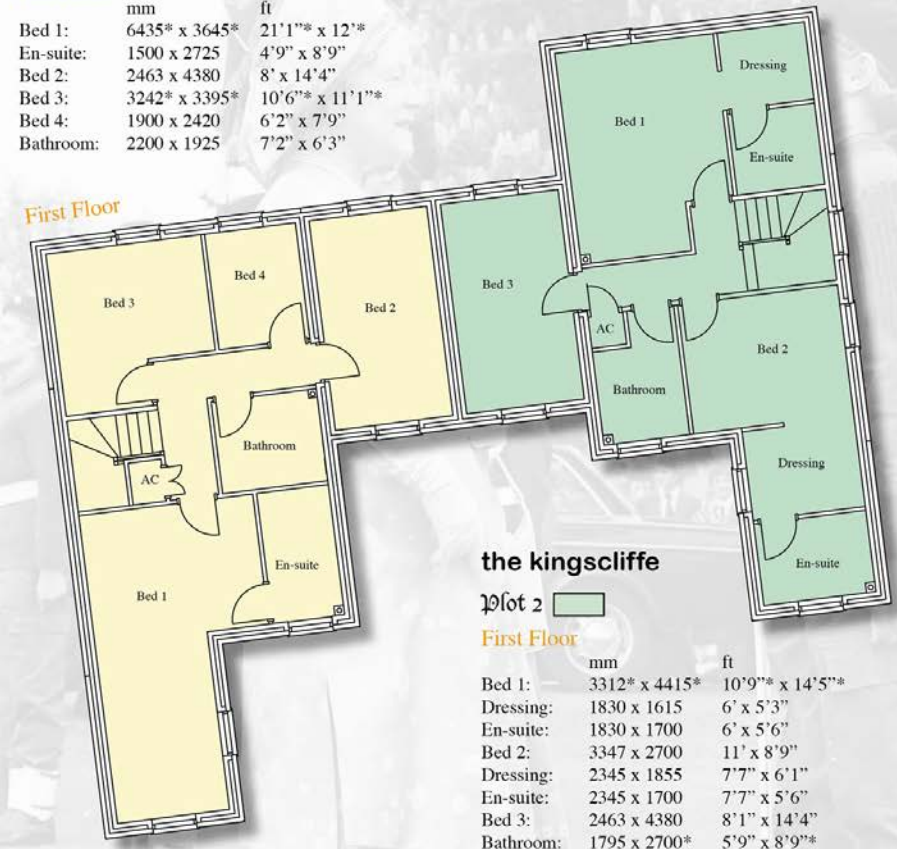
the glinton

Plot 1

First Floor

	mm	ft
Bed 1:	6435* x 3645*	21'1" x 12'*
En-suite:	1500 x 2725	4'9" x 8'9"
Bed 2:	2463 x 4380	8' x 14'4"
Bed 3:	3242* x 3395*	10'6" x 11'1"*
Bed 4:	1900 x 2420	6'2" x 7'9"
Bathroom:	2200 x 1925	7'2" x 6'3"

First Floor



the kingscliffe

Plot 2

First Floor

	mm	ft
Bed 1:	3312* x 4415*	10'9" x 14'5"*
Dressing:	1830 x 1615	6' x 5'3"
En-suite:	1830 x 1700	6' x 5'6"
Bed 2:	3347 x 2700	11' x 8'9"
Dressing:	2345 x 1855	7'7" x 6'1"
En-suite:	2345 x 1700	7'7" x 5'6"
Bed 3:	2463 x 4380	8'1" x 14'4"
Bathroom:	1795 x 2700*	5'9" x 8'9"*

*maximum

Illustrations and floorplans are for guidance only and subject to Sovereign Homes (UK) Ltd. continuous improvement policy. Please see inside back cover.

