

Moor Top/West Street, Drighlington,
South West of Leeds



A delightful community with a choice
of distinctive, quality homes.

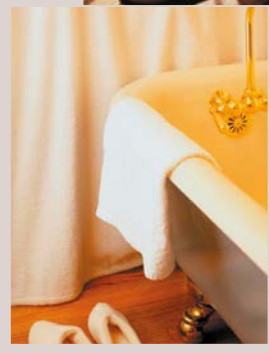
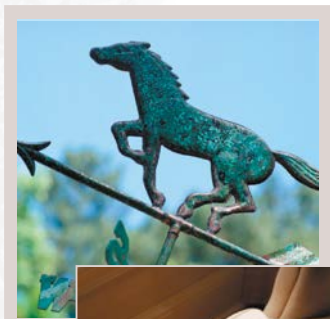


CAVENDISH COURT & MEWS

SITE PLAN

- Street Lighting
- ① Street Numbers
- ② Plot Numbers





The wide range of properties available at Cavendish Mews offers a distinctive and versatile way of living. Ranging from three-bedroom homes, to four and five bedroom three-storey properties and exclusive five bedroom linked mews homes. There is also a limited number of one and two bedroom stylish apartments.

Constructed in cast stone, the homes at this unique development have beautiful elevations and many benefit from striking artstone architectural details. The developers won the City of Leeds Award for Architecture in 1998 and their talent and commitment to building quality homes is reflected in this development, with many properties featuring archways, feature windows and porches and even a tower complete with turret roof. Inside the homes, the fine specification and extremely high standard of finishing is evident throughout.



A PERFECT CHOICE OF HOMES

unique in their design and
making a new, select community

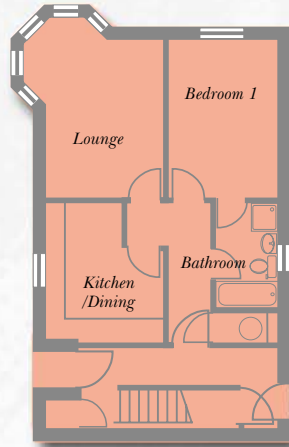


Front view of apartments 86, 86a, 86b.



86, 86A & 86B MOOR TOP

1 bed & 2 bed apartments
with dedicated parking space



GROUND FLOOR APARTMENT

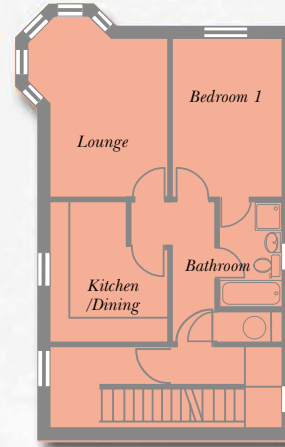
Lounge:
3.20m x 4.30m (10'6" x 14'2")

Kitchen/Dining Room:
3.60m x 3.20m (10'6" x 10'6")

Bedroom 1:
4.30m x 2.90m (14'2" x 9'6")

Bathroom:
2.80m x 1.75m (9'2" x 5'9")

Plot 86 (86 Moor Top)



FIRST FLOOR APARTMENT

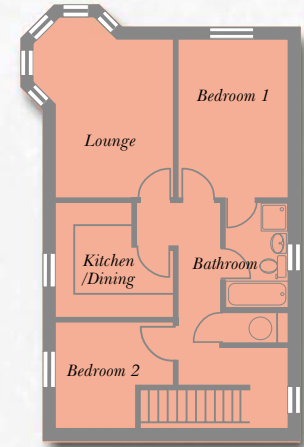
Lounge:
3.20m x 4.30m (10'6" x 14'2")

Kitchen/Dining Room:
3.60m x 3.20m (11'10" x 10'6")

Bedroom 1:
4.30m x 2.90m (14'2" x 9'6")

Bathroom:
2.80m x 1.75m (9'2" x 5'9")

Plot 86A (86A Moor Top)



SECOND FLOOR APARTMENT

Lounge:
3.20m x 4.30m (10'6" x 14'2")

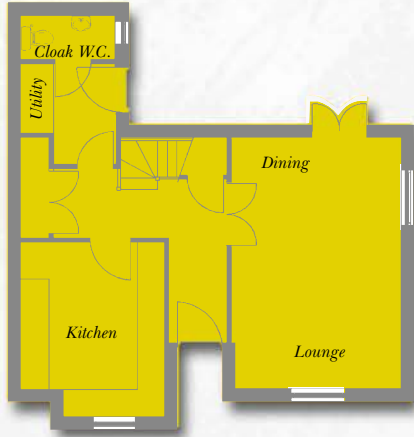
Kitchen/Dining Room:
3.00m x 3.20m (9'10" x 10'6")

Bedroom 1:
4.30m x 2.90m (14'2" x 9'6")

Bedroom 2:
3.20m x 2.80m (10'6" x 9'2")

Bathroom:
2.80m x 1.75m (9'2" x 5'9")

Plot 86B (86B Moor Top)



GROUND FLOOR

Lounge/Dining:
3.70m x 5.50m (12'2" x 18'0")

Kitchen:
3.15m x 3.80m (10'4" x 12'6")

Cloakroom/W.C.:
2.10m x 1.00m (6'11" x 3'3")

Utility:
2.20m x 2.08m (7'3" x 6'10")

Plot 15



FIRST FLOOR

Bedroom 1:
2.50m x 5.10m (8'3" x 16'9")

Bedroom 2:
3.80m x 3.10m (12'6" x 10'2")

Bedroom 3:
3.10m x 2.80m (10'2" x 9'2")

Bathroom:
2.20m x 1.90m (7'3" x 6'3")



Front view.



72 MOOR TOP

3 bedroom house
with parking space