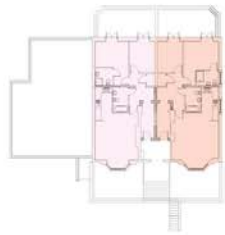


Site Plan

Whilst it is always the intention of Wrigley Developments Ltd. to build in accordance with the Site Plan shown within the brochure, it should be noted that the Site Plan, which has been drawn prior to commencement of the development, could be subject, on occasion, to boundary and layout change. This may specifically be attributed to the conversion part of the development.

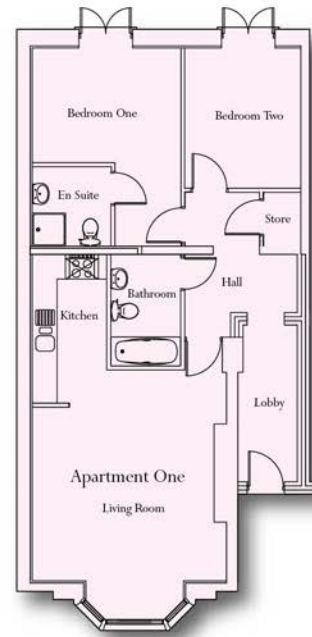


-  The Chase pages 10-15.
-  The Mews pages 16-18.
-  Coach House page 19.



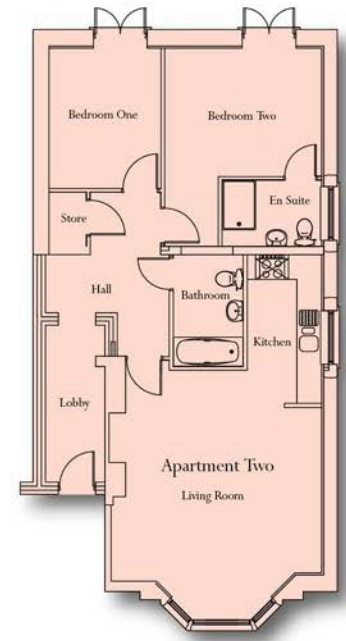
Lower Ground Floor

The Chase



Apartment One

- Living Room: 5000 x 4550
- Kitchen: 3550 x 1700
- Bathroom: 2650 x 1750
- Bedroom One: 4700 x 3500
- En Suite: 1870 x 1800
- Bedroom Two: 3250 x 2700



Apartment Two

- Living Room: 5100 x 5000
- Kitchen: 3575 x 1700
- Bathroom: 2650 x 1750
- Bedroom One: 3250 x 2600
- En Suite: 2300 x 1575
- Bedroom Two: 3800 x 3000

All room dimensions are in millimetres.

