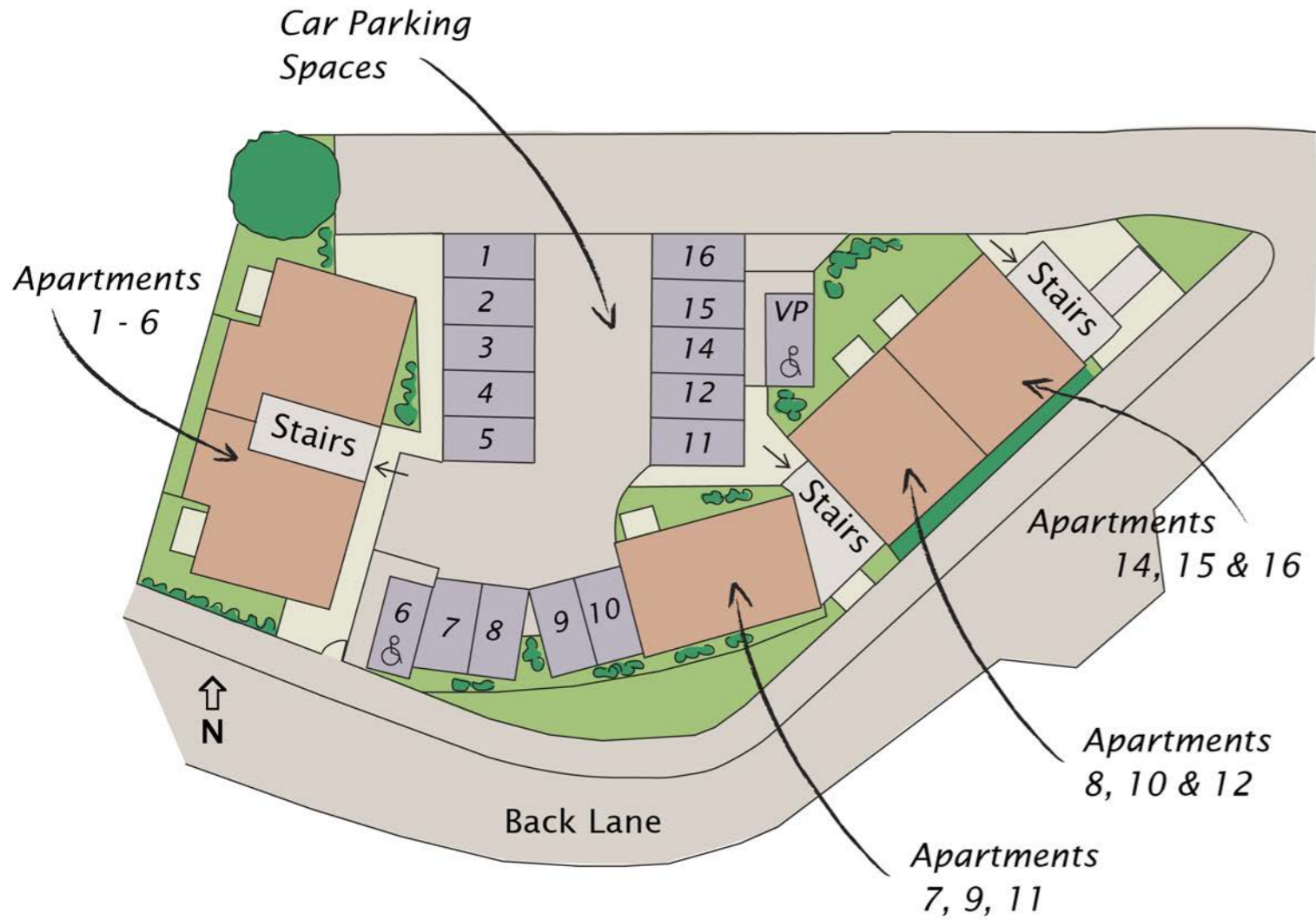


Elmfield Court



A new development of fifteen exclusive, spacious
2 bedroom apartments in Bramley, Leeds.



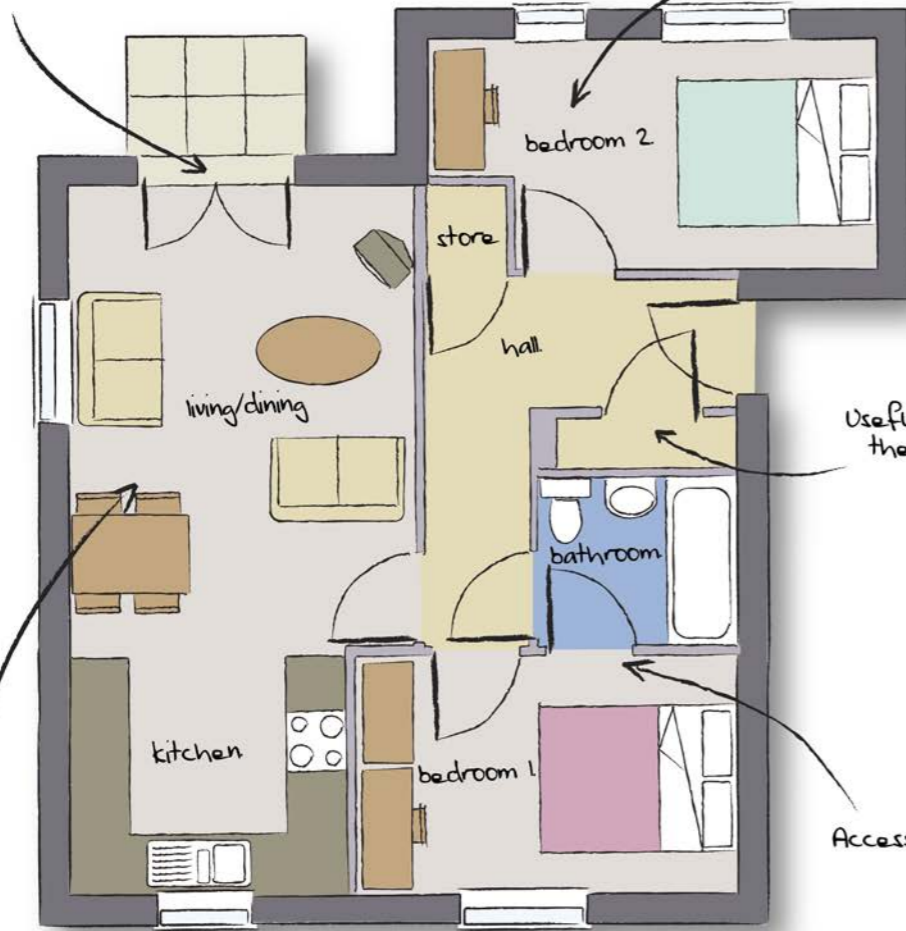


a site plan of
Elmfield Court



Patio doors to patio area (ground floor) or Juliette balcony (first and second floor).

spacious second bedroom



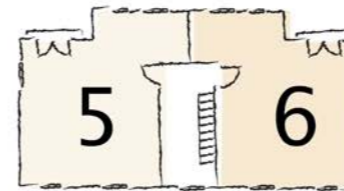
Useful storage in the hallway

Access to bathroom via master bedroom

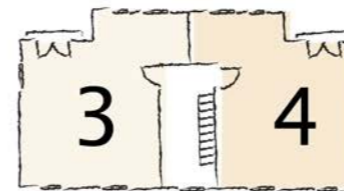
spacious open plan living area for kitchen, dining and living space

Apartments 1 - 6 room dimensions:

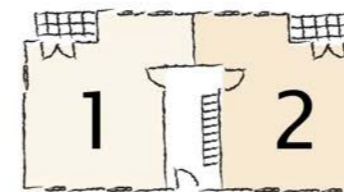
Kitchen/ Living	7087 x 3429 mm (reducing to 2718 mm)	23' 3" x 11' 3" (reducing to 8' 11")
Bedroom 1	3835 x 2237 mm	7' 8" x 12' 0"
Bedroom 2	2210 x 4496 mm (reducing to 3480 mm)	7' 3" x 14' 9" (reducing to 11' 5")
Bathroom	1979 x 1702 mm	5' 7" x 6' 5"



Second Floor



First Floor



Ground Floor



All details supplied are correct at time of going to press in March 2008. This brochure provides guidance and general illustration only. It is designed to present and impression of the range, quality and variety of the apartments available. Floor plans, layouts, photographs and illustrations are for example and do not represent exact final designs. Byre Developments have a policy of continuous improvement and consequently reserve the right to change products and services without prior notice and at any time. Distances and times are approximate.

Measurements given throughout this brochure are maximum sizes unless otherwise stated. Ground floor apartments have a patio area whereas first and second floor apartments have Juliette balconies. Kitchen and bathroom layouts are indicative only. Furniture is shown for visual purposes only and no furniture is included in the purchase.